



# G2 VAPOR TIGHT FIXTURE

**JAYKAL**

PROJECT NAME:

**JAYKAL LED SOLUTIONS, INC.**

[www.jaykal.net](http://www.jaykal.net)

PROJECT NOTES:

21499 Baltimore Ave.

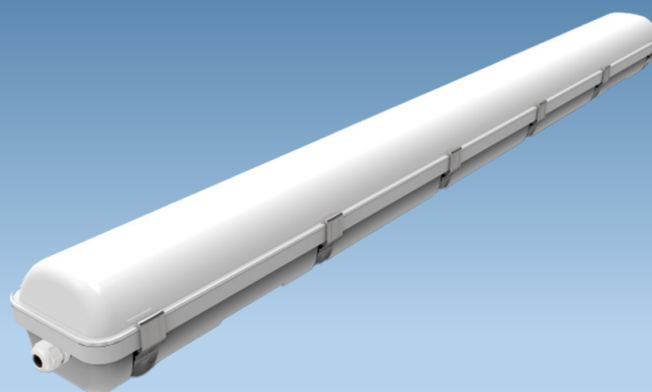
Georgetown, DE 19947

(P) 302-295-0015

(F) 302-295-0016

## FEATURES

- ◆ Wattages Selectable Available 12W - 120W
- ◆ Voltage Input 120-277VAC 50/60Hz
- ◆ CCT Selectable 3000K/4000K/5000K
- ◆ IP65 Rating, IK08 Rating
- ◆ Polycarbonate Construction with Integrated Powder Coated Lighting Tray
- ◆ Stainless Steel Clips



**RoHS**   
Compliant

Revised 12/13/23

*Specifications are typical values and may change without notification*

**efficiency. illuminated.**

# G2 VAPOR TIGHT FIXTURE



**JAYKAL**

## SPECIFICATIONS TABLE

MODEL	JLS-G2VT SERIES			
TYPE	M1	M2	M3	M4
WATTAGE	12W/16W/20W	22W/30W/40W	32W/40W/50W	80W/100W/120W
VOLTAGE	100-277VAC 50/60HZ			
EFFICACY	130lm/W (Frosted)/150lm/W (Clear)	130lm/W (Frosted) / 150lm/W (Clear)	130lm/W (Frosted) / 150lm/W (Clear)	130lm/W (Frosted) /150lm/W (Clear)
LUMENS (FROSTED)	1,560lm/2,080lm/2,600lm	2,860lm/3,900lm/5,200lm	4,160lm/5,200lm/6,500lm	10,400lm/13,000lm/15,600lm
LUMENS (CLEAR)	1,800lm/2,400lm/3,000lm	3,300lm/4,500lm/6,000lm	4,800lm/6,000lm/7,500lm	12,000lm/15,000lm/18,000lm
POWER FACTOR	>0.90			
DRIVER EFFICIENCY	>85%			
0-10V CURRENT	<1mA			
CRI	>80			
BEAM ANGLE	120°			
L70 HOURS	>100,000			
CCT	MCCT (3000K/4000K/5000K Selectable)			
WORKING TEMP.	-20°C—50°C			
IP RATING	IP65—Wet Locations			
HOUSING	Polycarbonate—Surface Mount / Chain / J-Box Mounting			
LENS	Frosted or Clear Polycarbonate			
DIMENSIONS (in.)	23.6"L x 4.92"W x 3.62"H (2 Ft.) / 47.2"L x 4.92"W x 3.62"H (4 Ft.) / 94.4"L x 4.92"W x 3.62"H (8 Ft.)			
FCC CERTIFICATION	FCC Title 47 CFR Part 18			

## ORDERING GUIDE

EXAMPLE: JLS-G2VT-4-M2-277-MCCT-C-10

MODEL	LENGTH	WATTAGE	VOLTAGE	CCT	LENS	DIMMING	OPTIONS
JLS-G2VT	2 = 2 Ft. 4 = 4 Ft. 8 = 8 Ft.	M1 = 12W/16W/20W* M2 = 22W/30W/40W** M3 = 32W/40W/50W** M4 = 80W/100W/120W*** * For 2ft only ** For 4ft only *** For 8ft only	277 = 100-277VAC 347 = 100-347VAC * * For 4ft only	MCCT = 3000K/4000K/5000K	C = Clear F = Frosted	10 = 0-10V	Blank = No option M = Motion Sensor EM = Battery Backup

*Specifications are typical values and may change without notification*

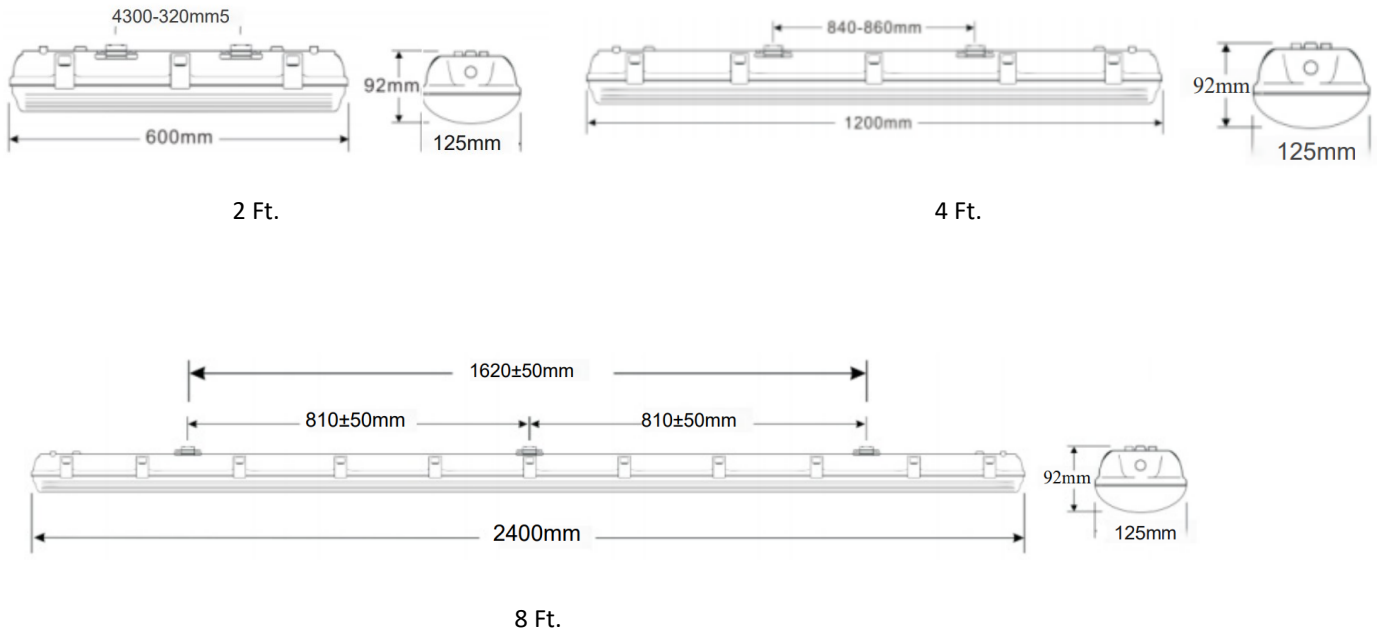
**efficiency. illuminated.**

# G2 VAPOR TIGHT FIXTURE



JAYKAL

## DIMENSIONS



*Specifications are typical values and may change without notification*

**efficiency. illuminated.**