

# 12W-30W CANOPY LUMINAIRE



**JAYKAL**

PROJECT NAME:

PROJECT NOTES:

**JAYKAL LED SOLUTIONS, INC.**

[www.jaykal.net](http://www.jaykal.net)

21499 Baltimore Ave.

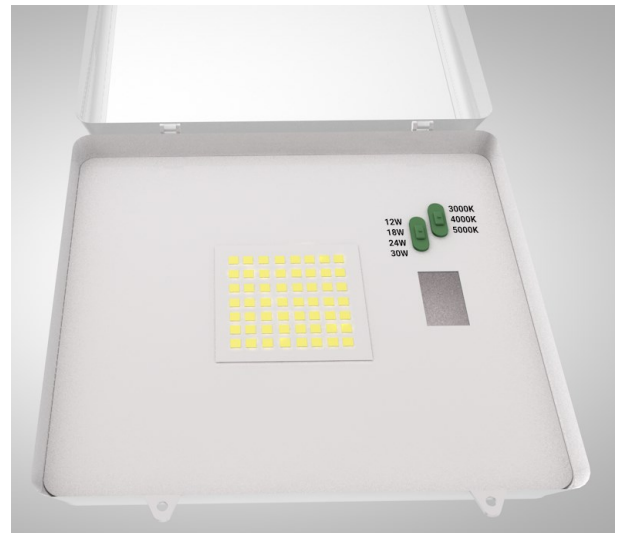
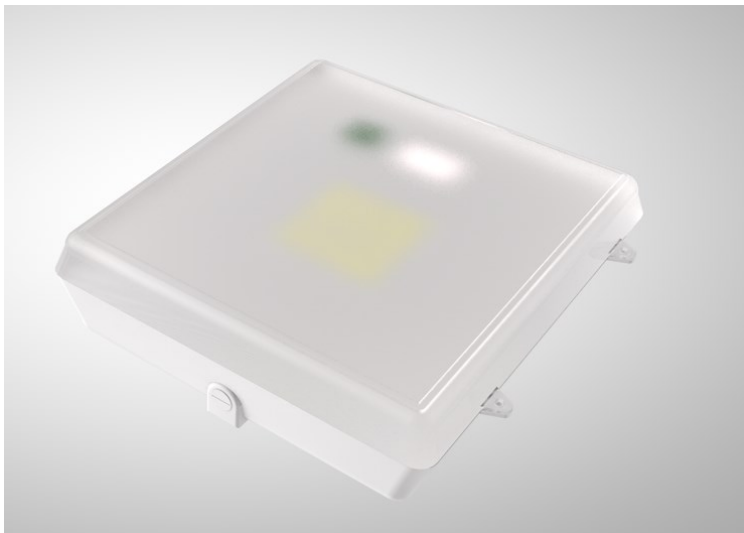
Georgetown, DE 19947

(P) 302-295-0015

(F) 302-295-0016

## FEATURES & BENEFITS

- ◆ High Efficacy of up to 125+lm/W
- ◆ Field Adjustable Wattage with 4 Presets
- ◆ CCT Presets: (3000K, 4000K, 5000K)
- ◆ Finless housing design, reduces dust retention.
- ◆ 10 Year Warranty



Revised 2/12/21

*Specifications are typical values and may change without notification*

**efficiency. illuminated.**



# 12W-30W CANOPY LUMINAIRE

JAYKAL

## SPECIFICATIONS TABLE

MODEL	JLS68103-G3SC (12W-30W)							
INPUT VOLTAGE	100-277VAC							
DRIVER	M1				M2			
WATTAGE	12W	16W	18W	20W	20W	24W	28W	30W
EFFICACY	125lm/W							
LUMENS	1,500lm	2,000lm	2,250lm	2,500lm	2,500lm	3,000lm	3,500	3,750lm
POWER FACTOR	>0.95							
THD	<10.5%							
L70 HOURS	>100,000 Hours							
CRI	>82							
CCT PRESETS	3000K / 4000K / 5000K							
OPERATING TEMP.	-30°C - 45°C							
IP RATING	IP65							
WARRANTY	10 Year Standard Warranty							
SAFETY QUALIFICATIONS	ETL				ETL			
DLC LISTED	PREMIUM 5.1				PREMIUM 5.1			
DLC PRODUCT ID	PO92BCCB				PL8ER408			

## DIMENSIONS

MODEL	LENGTH	WIDTH	HEIGHT
JLS68103-G3SC	10.25in.	9.75in.	2.875in.

## ORDERING GUIDE

## EXAMPLE: JLS68103-G3SC-M1-277-MCCT-D-PC

MODEL	-	WATTAGE	-	CCT	-	DIMMING	-	CONTROLS	-	PHOTOCELL	-	LED CHIP	-	DIFFUSER
JLS68103-G3SC		<b>M1</b> = (12W, 16W, 18W, 20W) <b>M2</b> = (20W, 24W, 28W, 30W)		<b>8MCCT</b> = 30K/40K/50K		<b>10</b> = 0-10V <b>50</b> = Bi-Level Dimming		<b>N</b> = No Controls <b>OC</b> = Occupancy <b>OCBL</b> = Occupancy Bi-Level Dimming <b>OCAL</b> = Occupancy Bi-Level Dimming with Grouping <b>ENCN</b> = Enlited <b>IOT</b> = Internet of Things		<b>PC</b> = Photocell		<b>28</b> = 2835		<b>P</b> = PARKING GARAGE <b>C</b> = CANOPY

Specifications are typical values and may change without notification

efficiency. illuminated.