

# 12-45W SLIM CANOPY LUMINAIRE



**JAYKAL**

PROJECT NAME:

**JAYKAL LED SOLUTIONS, INC.**

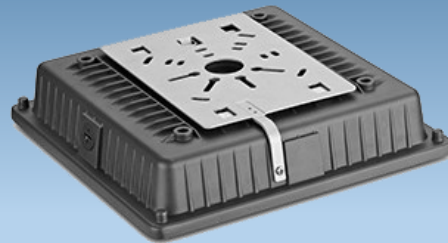
[www.jaykal.net](http://www.jaykal.net)

PROJECT NOTES:

26832 Lewes Georgetown Hwy,  
Building 2, Unit E  
Harbeson, DE 19951  
(P) 302-295-0015  
(F) 302-295-0016

## FEATURES & BENEFITS

- ◆ High Efficiency LED Driver
- ◆ Wide Range 120-277VAC Input
- ◆ Lumileds LEDs Offer High Luminous Efficiency and Long Life.
- ◆ Cast Aluminum Construction Provides Superior Cooling Performance , LED Tj<85
- ◆ Excellent Optical Design Optimizes Light Utilization and Distribution.
- ◆ 0 - 10V Dimming Standard
- ◆ Photocell Control Available (Option)



Revised 2/17/20

*Specifications are typical values and may change without notification*

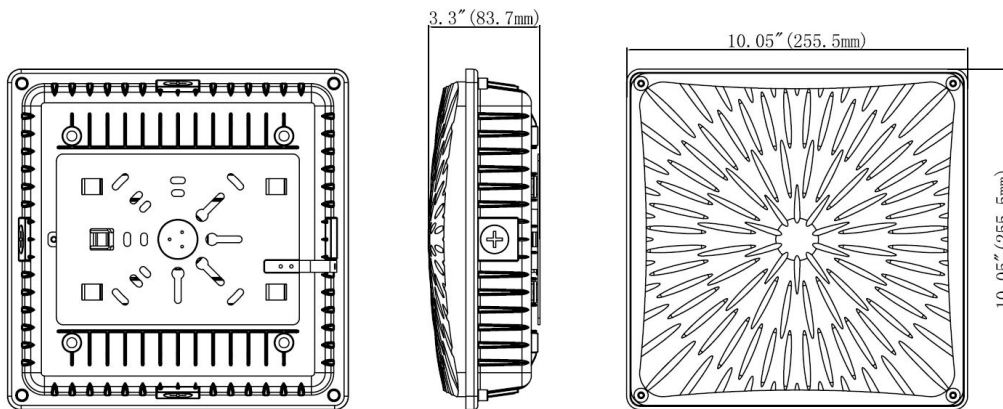
**efficiency. illuminated.**

# 12-45W SLIM CANOPY LUMINAIRE



**JAYKAL**

SPECIFICATIONS TABLE					
WATTAGE	45W	LUMENS	5,850lm	EFFICACY	130lm/w
INPUT VOLTAGE	120-277VAC/200-480VAC 50/60hz	POWER FACTOR	0.95	CRI	> 70
THD	< 14 %	CCT	3000K / 4000K / 5000K		
LIFE (L70)	140,000 hrs. +	ILLUMINATION ANGLE	159°	OPERATIONAL TEMP.	-30° - +45°C
HOUSING FINISH	Dark Bronze / White	LENS FINISH	Clear	Protection	IP65
HOUSING MATERIAL	Aluminum Die-cast	LENS MATERIAL	Polycarbonate	Environment	Wet Locations
WEIGHT	5.5 lbs.	DIMENSIONS	10.05 x 10.05 x 3.3 in		
FCC Compliance	FCC 47, Part 18	WARRANTY	5 Year Standard, 10 Year Available		



ORDERING GUIDE					EXAMPLE: JLS68103-G2SC-45-277-D-M					
MODEL	-	VOLTAGE	-	CCT	-	FINISH	-	CONTROL	-	LUMEN PACKAGE
JLS68103-G2SC-45		277 = 120-277VAC		30K = 3000K		D = Dark Bronze		M = Motion Sensor		12 = 12W (1,560lm)
		480 = 200-480VAC		40K = 4000K		C = Custom		PC = Photo Cell		20 = 20W (2,600lm)
				50K = 5000K						25 = 25W (3,250lm)
										35 = 35W (4,550lm)



Not all product variations listed on this page are DLC qualified. Visit [www.designlights.org/search](http://www.designlights.org/search) to confirm qualification.

Contact Jaykal for additional product approval.

*Specifications are typical values and may change without notification*

**efficiency. illuminated.**