



G2 CANOPY LUMINAIRE

JAYKAL

PROJECT NAME:

JAYKAL LED SOLUTIONS, INC.

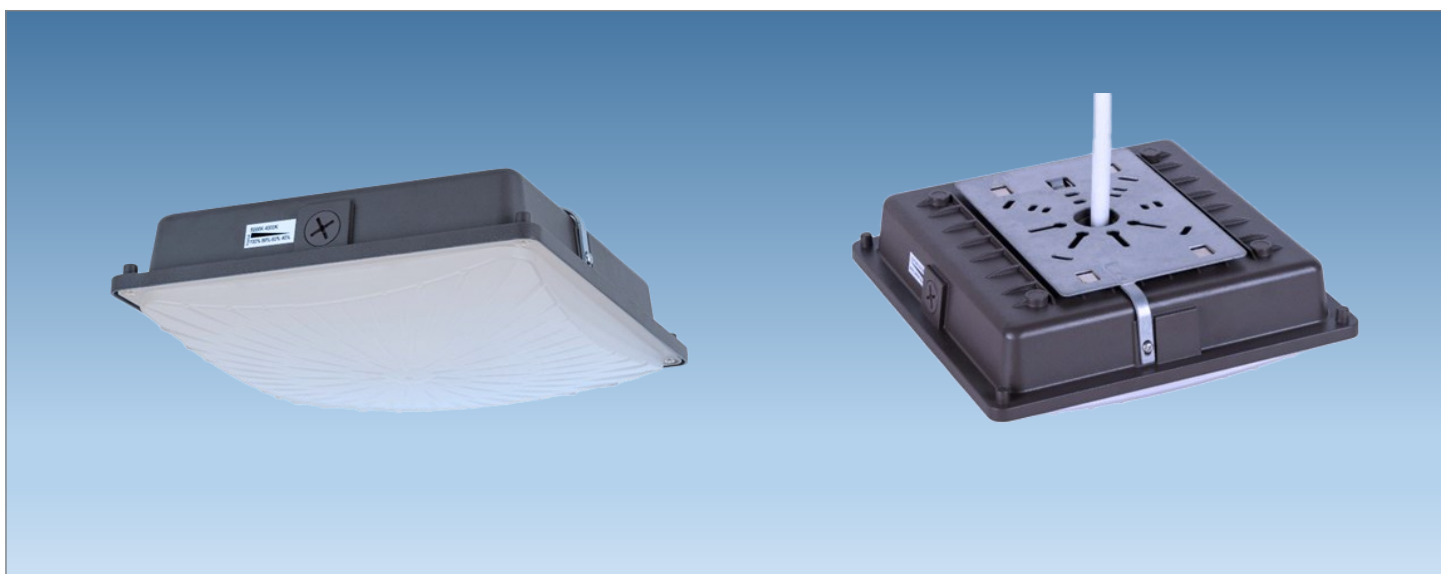
www.jaykal.net

PROJECT NOTES:

21499 Baltimore Ave.
Georgetown, DE 19947
(P) 302-295-0015
(F) 302-295-0016

FEATURES

- ◆ Wattage & CCT Selectable
- ◆ Wattage Options : 26W/39W/52W/65W
- ◆ High Efficacy of up to 130lm/W
- ◆ CCT Options : 4000K, 5000K
- ◆ Die-Cast Aluminum Cooling Design
- ◆ Excellent Optics design, greatly improve the light utilization and evenness
- ◆ 5 Year Warranty, 10 Year Optional



Revised 2/17/20

Specifications are typical values and may change without notification

efficiency. illuminated.

G2 CANOPY LUMINAIRE



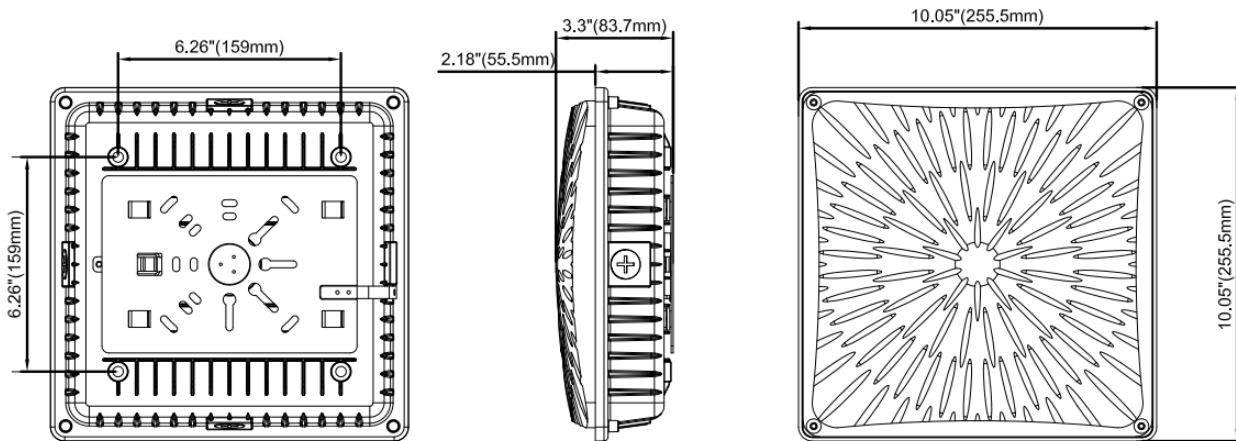
JAYKAL

SPECIFICATIONS TABLE

MODEL	JLS68103-G2SC
INPUT VOLTAGE	100-277VAC
WATTAGE	26W/39W/52W/65W Selectable
EFFICACY	>130lm/W
LUMENS	3,380lm/5,070lm/6,760lm/8,450lm
POWER FACTOR	>0.95
THD	<20%
L70 HOURS	>100,000 Hours
CRI	>80
CCT PRESETS	4000K / 5000K Selectable
B.U.G. RATING	B3-U3-G2
RIVER EFFICIENCY	>89%
OPERATING TEMP.	-20°C - 45°C
IP RATING	IP65
WARRANTY	5 Year Standard Warranty, 10 Year Optional

DIMENSIONS

MODEL	LENGTH	WIDTH	HEIGHT
JLS68103-G2SC	10.05 in.	10.05 in.	3.3 in.



ORDERING GUIDE

EXAMPLE: JLS68103-G2SC-MW-277-MCCT-D

MODEL	WATTAGE	VOLTAGE	CCT	COLOR	OPTION
JLS68103-G2SC	MW = 26W/39W/52W/65W Selectable	277 = 100-277VAC	MCCT = 4000K/5000K Selectable	D = Dark Bronze W = White B = Black S = Silver	Blank = No extra option M = Motion Sensor

Specifications are typical values and may change without notification

efficiency. illuminated.